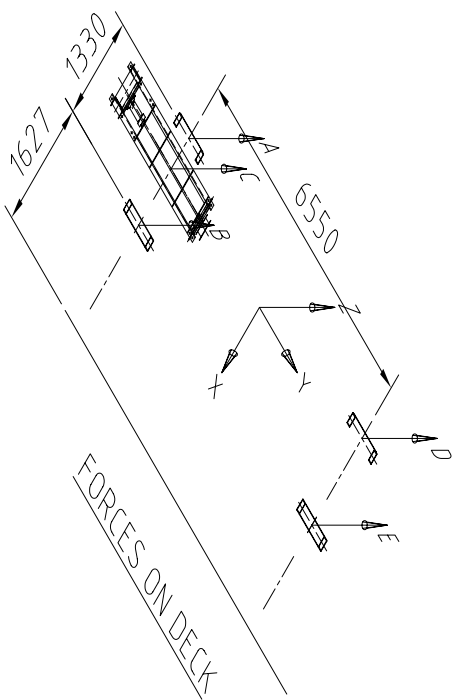
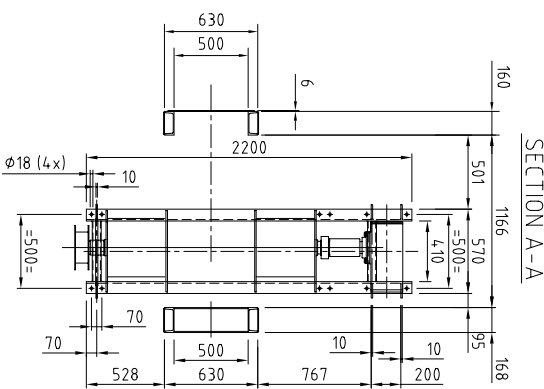
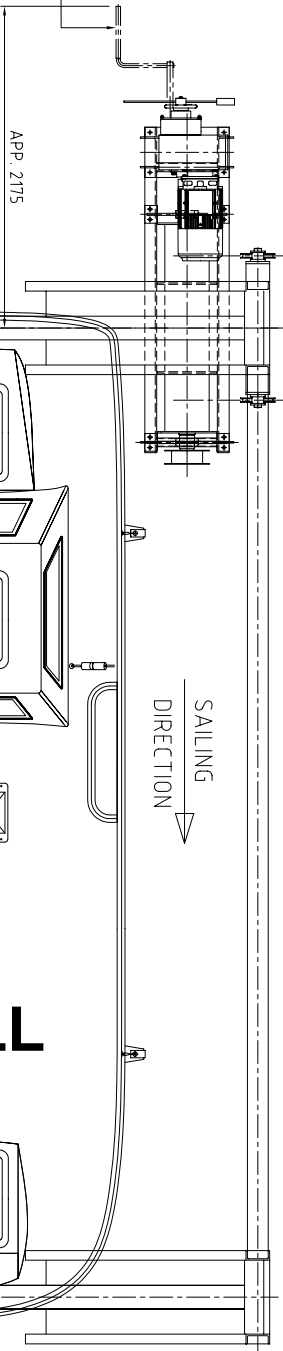


Support loads [kN] per system	A	B	C	D	E
Davit situated at low side, with boat swung away from the ship. (list conditions 20°)	123	-135	26	117	-153

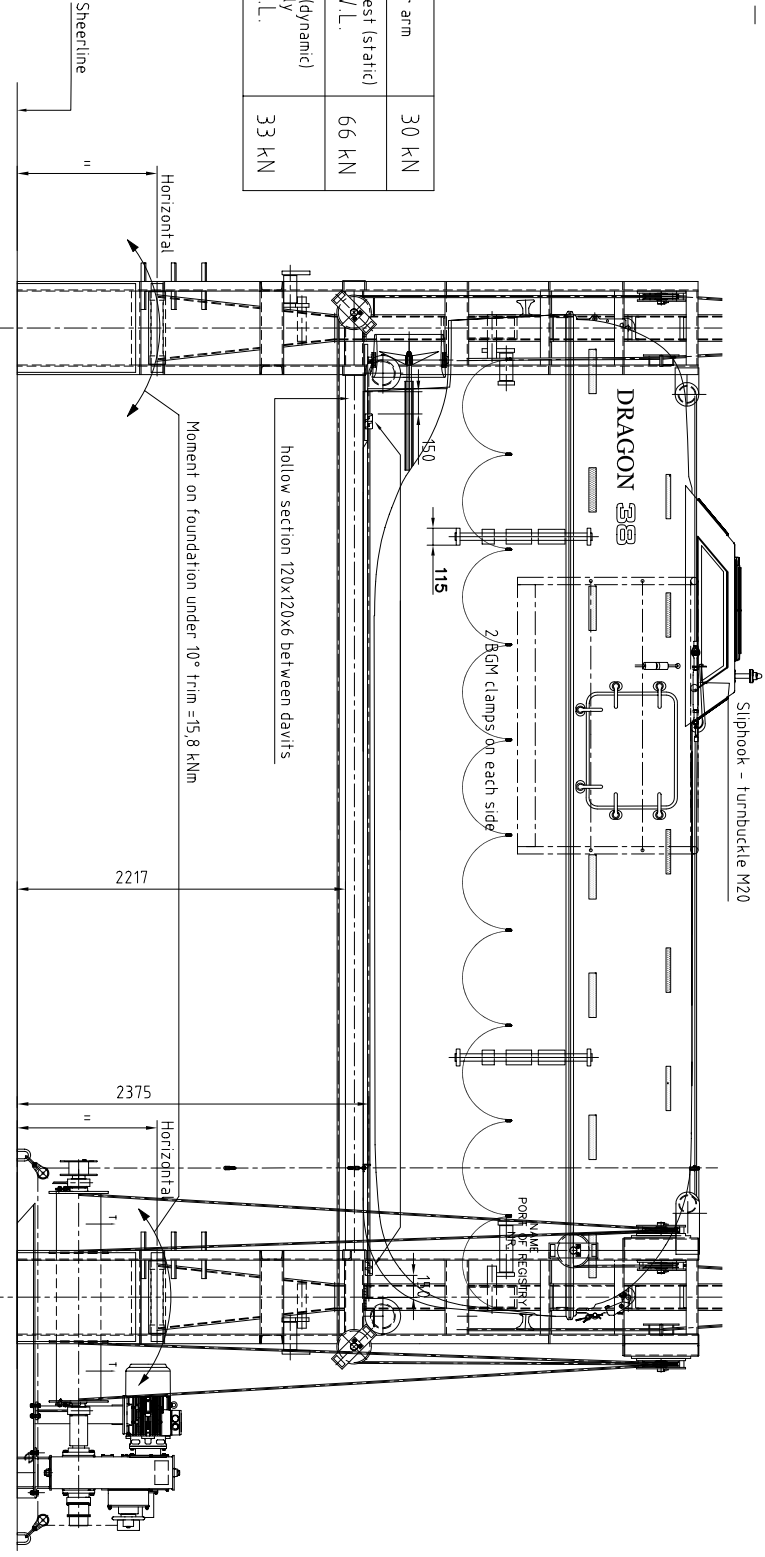
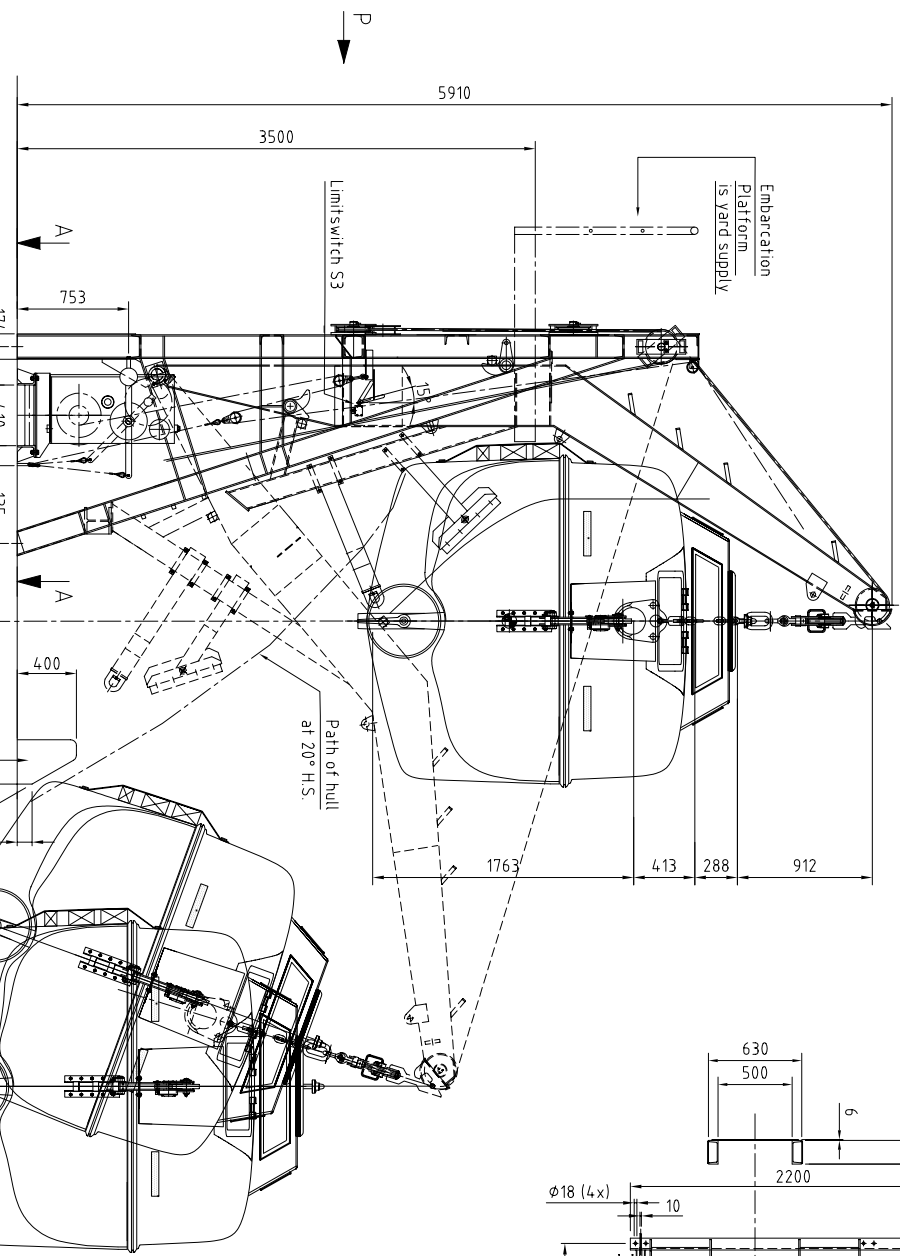
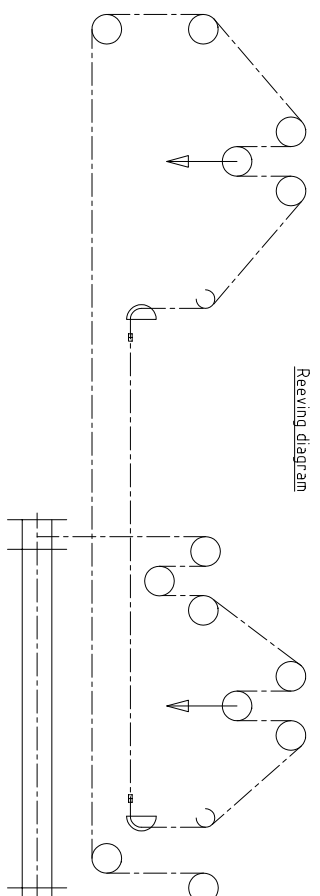
a) All forces mentioned are action forces  
b) Forces are calculated with 10% overload  
c) Forces are per location and for the forces per beam need to be divided by 2.



**MAIN DIMENSIONS:**  
boat fully equipped: 2450 kg  
- without persons 5300 kg  
- with 38 persons (75kg) 5585 kg  
- with 38 persons (82.5kg) 5585 kg  
length oa: 6.77 m  
breadth: 2.25 m  
height over canopy: 2.51 m  
height gunwale: 1.30 m  
height max: 2.51 m  
pax: 38



S.W.L. Per arm	30 kN
Workshop test (static) 2.2 x S.W.L.	66 kN
Board test (dynamic) lowering only 1.1 x S.W.L.	33 kN



FOR SCOPE OF SUPPLY, SEE ORDER

VIEW-P

Boat-supports and keelstraps will be delivered separately and should be mounted / welded at the right place by yard  
All components as davit-stool and pipe between davits will be supplied without installation margin  
Pushbutton box to be placed at outboard

This drawing is for information only and must not be used for construction or fabrication, prior to final design.

Rev	Date	Description	Name
0			
1			
2			
3			
4			
5			

TITLE: ARRANGEMENT & DECKFOUNDATIONS "PLG 60"

SCALE: 1:25

DATE: 07-04-09

PRODUCTION: NEN-ISO 2768-1

SIZE: A1

