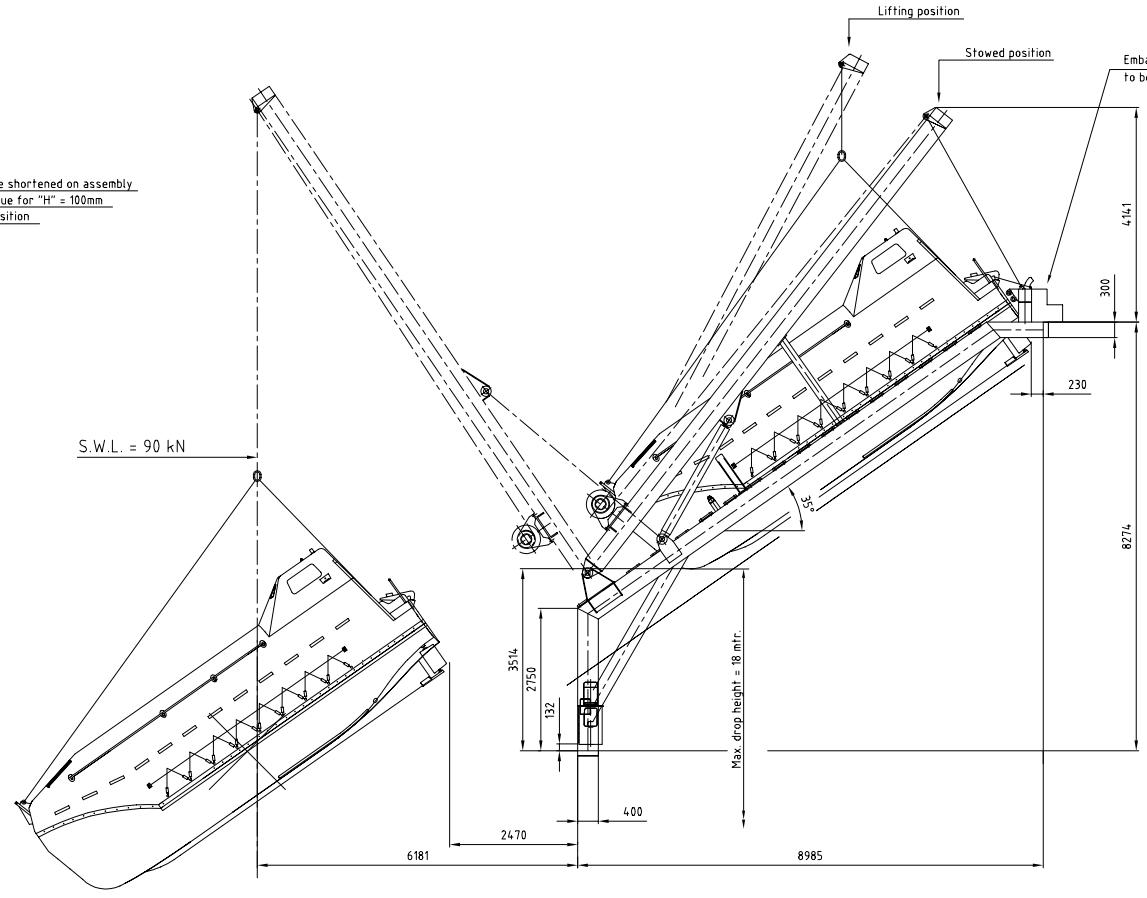
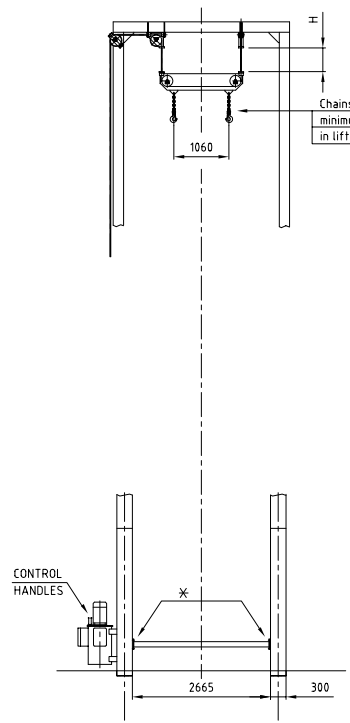
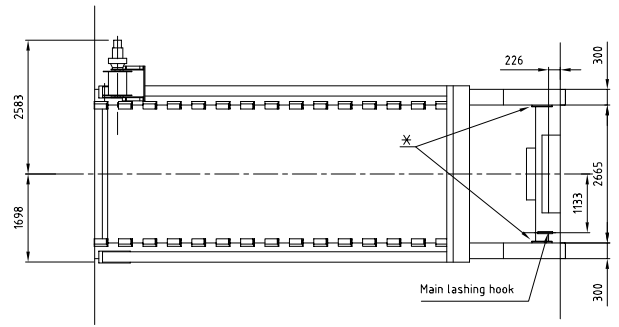


This drawing is for information only and must not be used for construction or fabrication, prior to final design.



SPECIFICATIONS	
MANUFACTURER DAVIT	NED-DECK MARINE
S.W.L.	9000 kG
TYPE	FFH-90
MANUFACTURER BOAT	N.M.E.
BOAT WEIGHT incl.FUEL,EQUIPMENT	5550 kG
NUMBER OF PERSONS	44
TYPE OF BOAT	JY-FF-8.50

ITEM	WEIGHT
DAVIT WITH WINCH approx.	8850 kG
HYDR POWER PACK	175 kG
OIL TOTAL	85 kG
WEIGHT TOTAL APPROX.	9110 kG

FOR SCOPE OF SUPPLY SEE ORDER

Sheaves and pivotpoints contain self-lubricated bushes which have to be greased prior to assembly

Davit will be delivered with 100mm overlength and must be cut on correct length by yard to suit deck

All separate delivered parts to be welded or mounted by yard

* Connection flanges after mounting to be welded together by yard

		NED-DECK MARINE Survival Systems & Deck Equipment		DRAWN: RvB DATE: 22-10-'02	TOLERANCES NEN-ISO 2768-1
Validation 22 371022 Bureau Tel: +31 83 42-42745 Fax: +31 83 363-42771		APPROVED: - SCALE: 1:50	PROJECTION 	DRAWING NUMBER A-100580	
<small>This drawing is the property of NED-DECK MARINE B.V. and may not be reproduced or distributed to third parties without their specific written consent</small>				SIZE A1	REVISION A